

# **HDCAM SR**



  
You make it a Sony

**HDCAM SR**



✍️ **HDCAM-SR = Extension**  
de la gamme HDCAM



✍️ **Format d'échange universel**  
ITU-709: full HD 1920x1080@24

✍️ **Applications haute qualité:**  
Post-Production, Mastering,



✍️ **Choix 4:2:2 / 4:4:4**

✍️ **Multi-canal 12 canaux audio**





**Technologie**

 **Produits**



# HDCAM SR

## Chiffres clefs

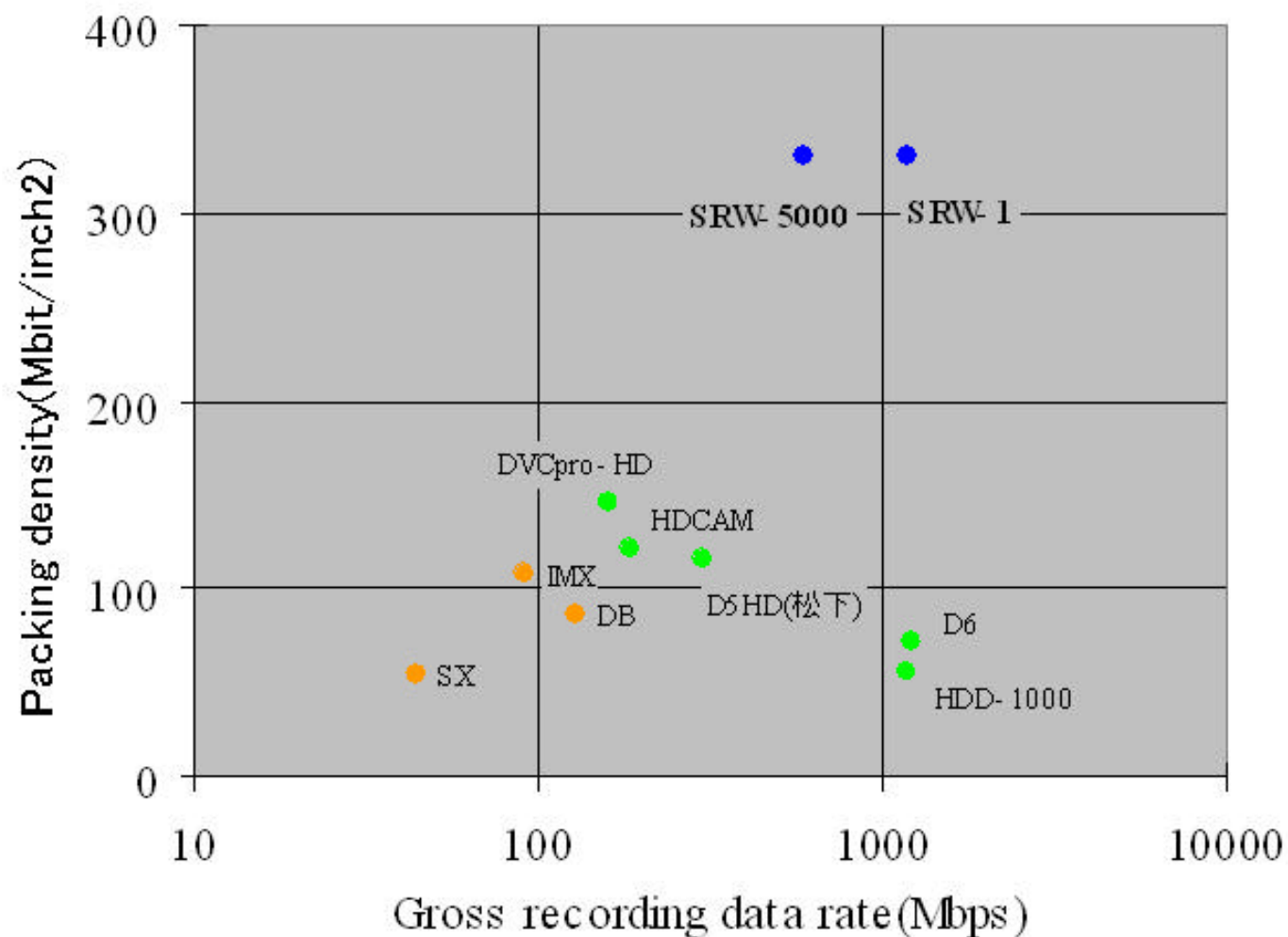


HDCAM SR	
VIDEO	
Compression	<b>MPEG4 SP</b>
Quantification	<b>10 bit</b>
AUDIO	
nombre de canaux	<b>12 ch</b>
Echantill./Quantification	<b>48KHz / 24bit</b>
Pistes / Trame	12 / Field
Vitesse de bande (mm/s)	117.62
Largeur piste (µm)	13.2
Longu. d'onde Min. (µm)	<b>0.294</b>
Débit TOTAL (Mbps)	593.3
Débit VIDEO (Mbps)	<b>439.4</b>
Autonomie (min.)	<b>124 (L)</b> 40 (S)



**HDCAM SR**

# Densité numérique

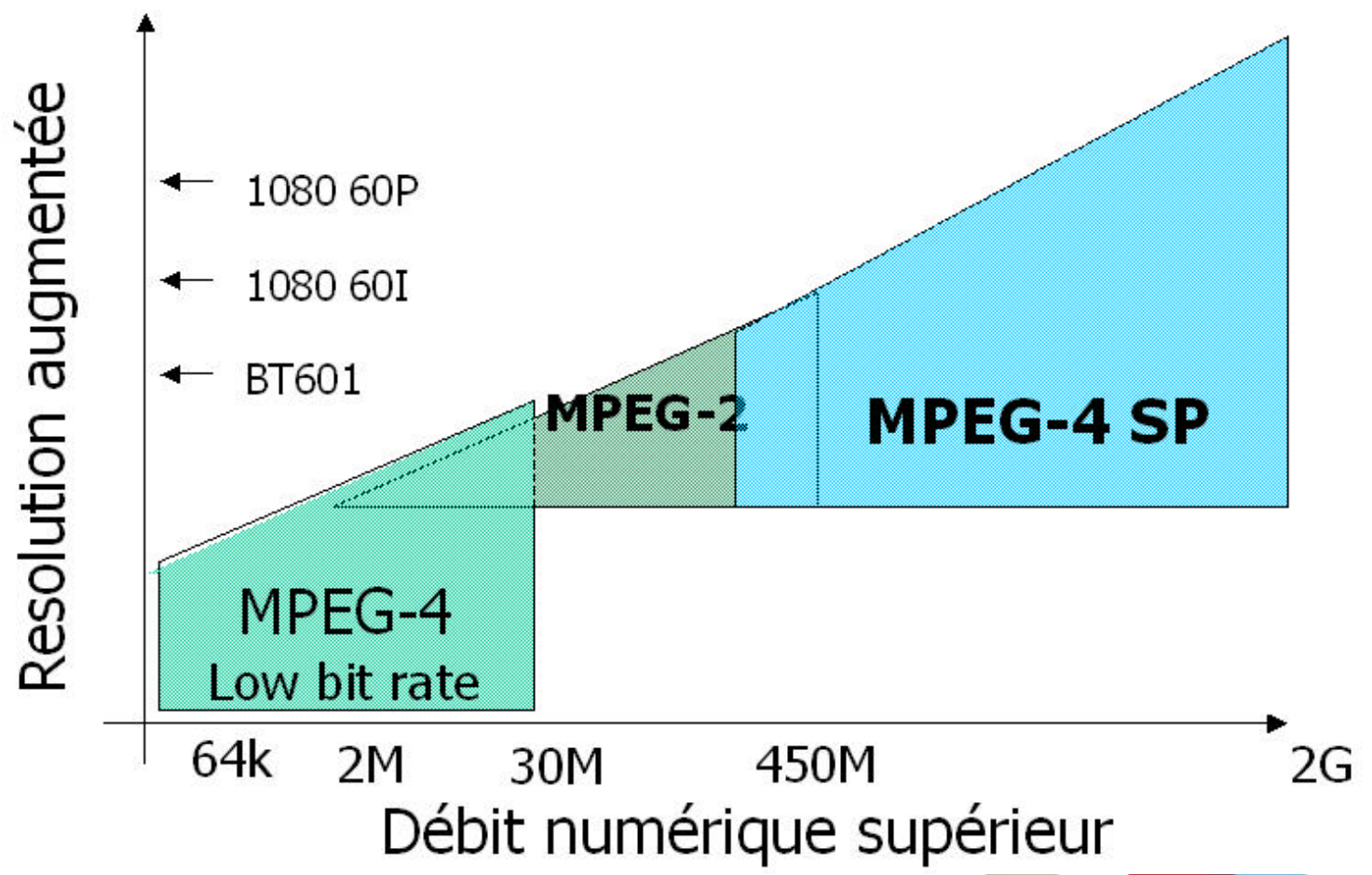


You make it a Sony

**HDCAM SR**

# MPEG-4 SP

## Une classe à part



You make it a Sony

**HDCAM SR**

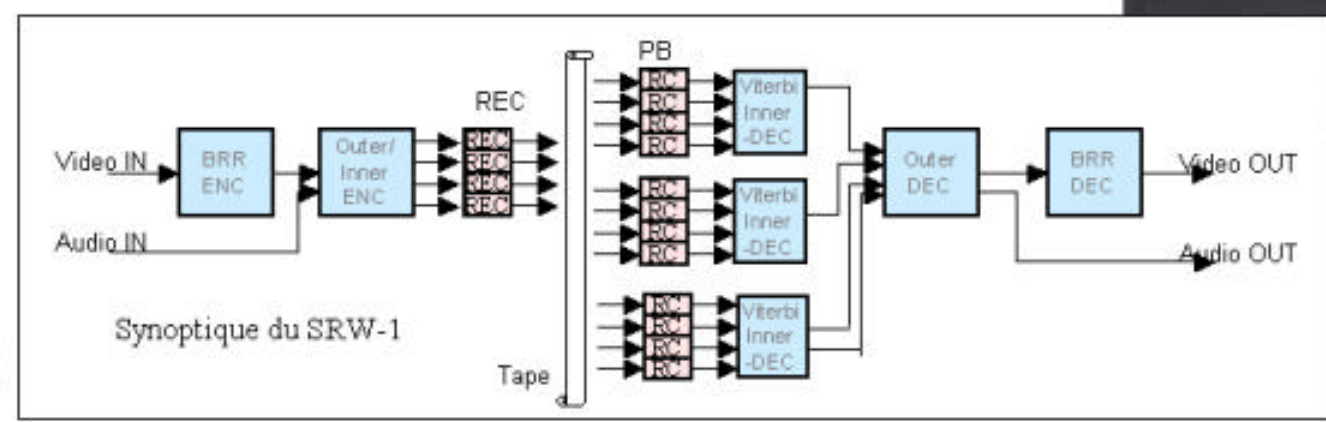
# MPEG-4 SP -Détails

- ✍ Studio Profile: ISO/IEC 14496-2
- ✍ Évolutivité :
  - SDTV, HDTV, 2k
  - **422, RGB**
  - **10, 12bit**
  - up to 60P
- ✍ Adapté à l'analyse
  - Progressif; Intra-Image
  - Entrelacé; Intra-Trame
- ✍ Process DPCM & DCT parallèles
  - Differential Pulse Code Modulation
    - Process Sans pertes
  - DCT
    - Amélioré / MPEG-2

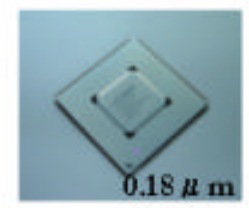


# HDCAM SR

## Exemple d'intégration



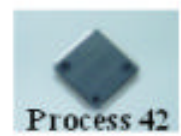
SRW-1: une seule carte



Digital signal processing LSI



Rec Amp



Read Channel



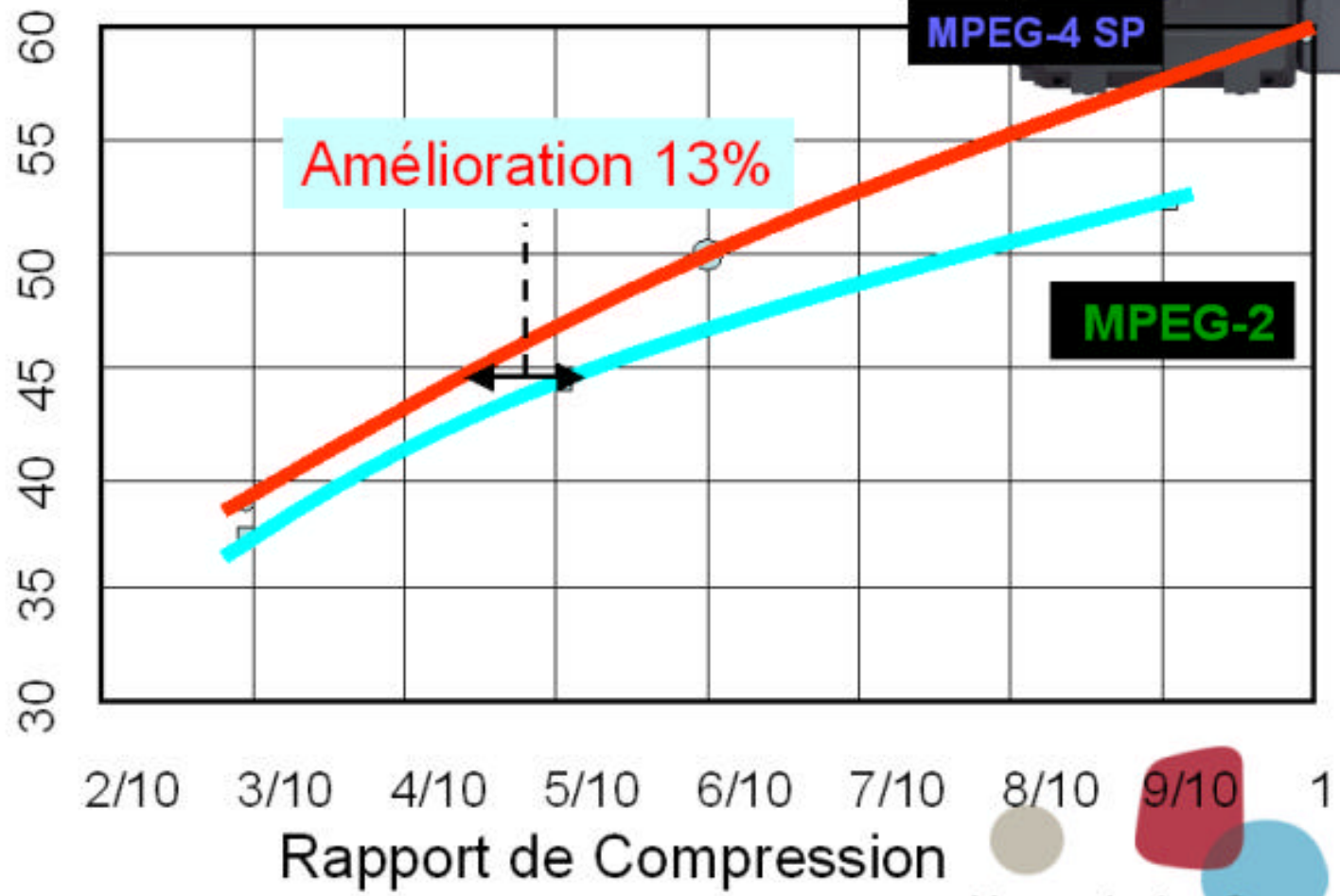
You make it a Sony

**HDCAM SR**

# MPEG-4 SP Performance



SNR (dB)



Amélioration 13%

MPEG-4 SP

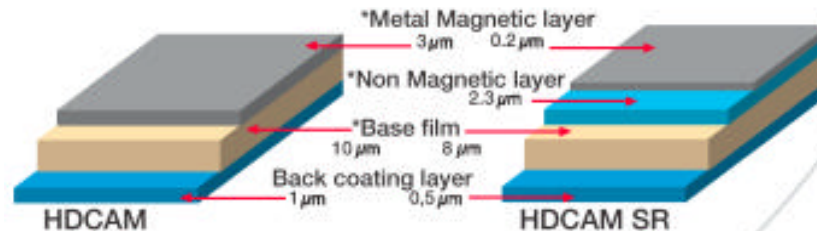
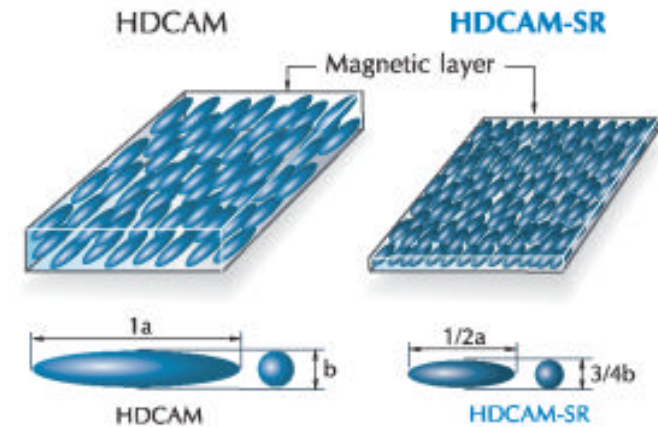
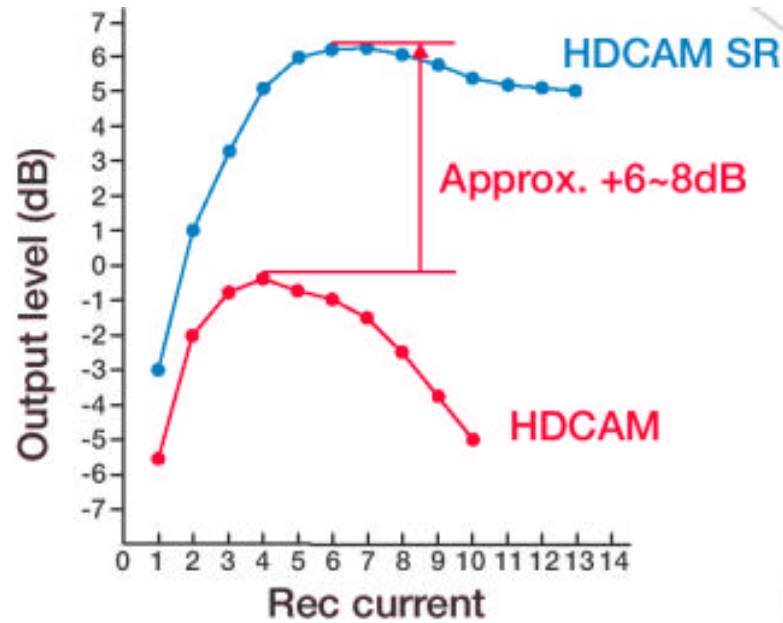
MPEG-2

2/10 3/10 4/10 5/10 6/10 7/10 8/10 9/10 1  
Rapport de Compression

You make it a Sony

# HDCAM SR

## La bande HDCAM-SR

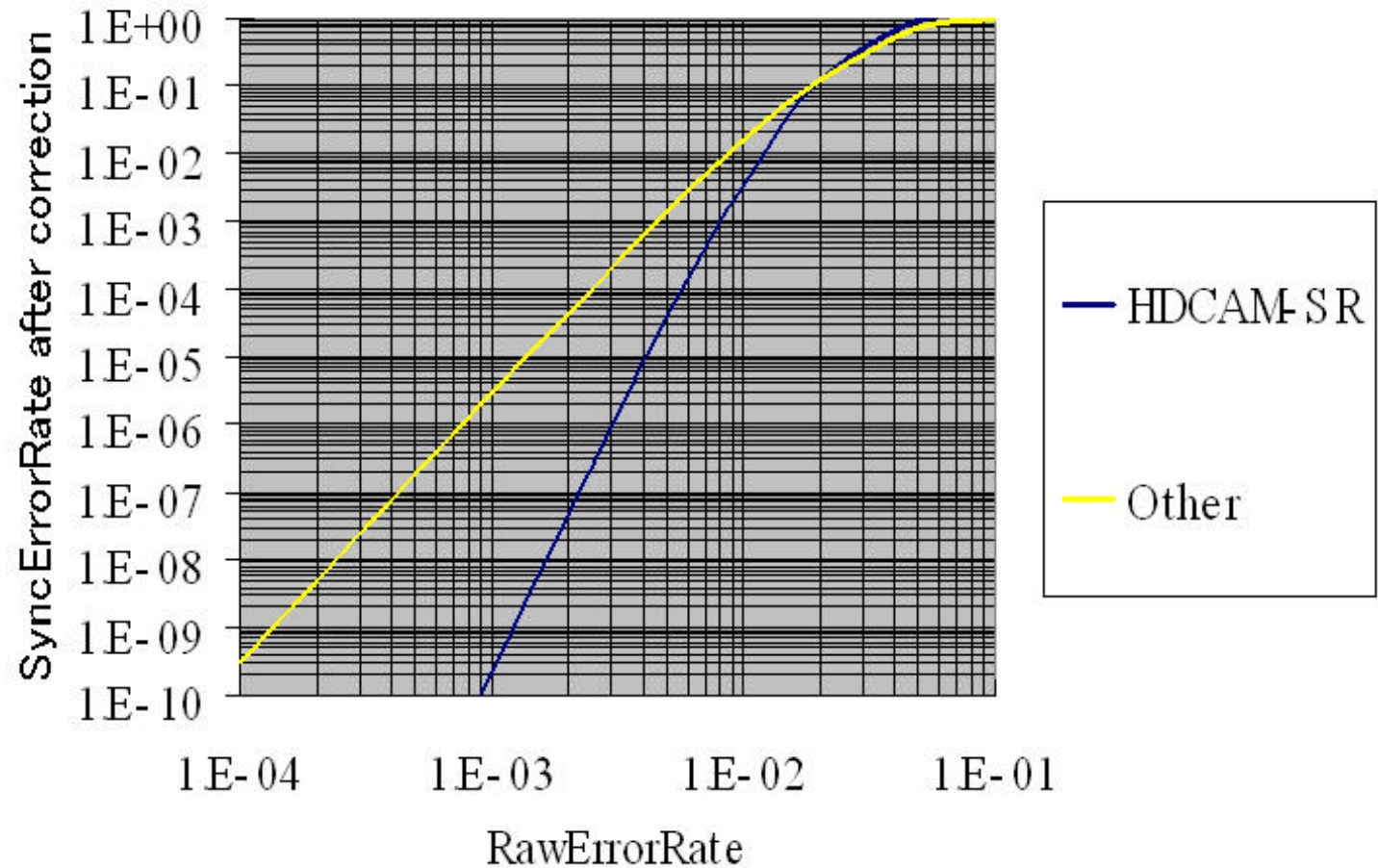


**HDCAM SR**

# Correction d'erreurs



INNER ERROR CORRECTION CAP ABILITY



You make it a Sony



Technologie

 **Produits**



**HDCAM SR**

# VTR Studio SRW-5000



Éclair / Digimage / GTC / Teletota / Transatlantic

( à Sept. 04 )



  
You make it a Sony

**HDCAM SR**

# SRW-5000

✍ 1080 @ 23.98/24/25/29.97/30 PsF

- 1080 50/59.94/60 Entrelacé
- 720 59.94/60P

✍ Re-lecture

- HDCAM
- Digital BETACAM (option)

✍ Autonomie

- cassette L : 155min @ 23.98PsF, 124min @ 59.94i
- cassette S : 50min @ 23.98PsF, 40min @ 59.94i



You make it a Sony

# HDCAM SR

## SRW-5000



Playback Tape Format		HD-SDI OUT	SD-SDI OUT	Format Converter OUT		
HDCAM-SR or HDCAM	1080/4:2:2	23.98PsF	1080/4:2:2/23.98PsF	—		
				525/59.94i	1080/4:4:4/23.98PsF 1080/4:2:2/59.94i 1080/4:4:4/59.94i 720/4:2:2/59.94P	
				—	1080/4:4:4/24PsF 1080/4:2:2/60i 1080/4:4:4/60i	
		24PsF	1080/4:2:2/24PsF	—	625/50i	1080/4:4:4/25PsF
						1080/4:2:2/60i
						1080/4:4:4/60i
						1080/4:4:4/25PsF
						720/4:2:2/59.94P
						1080/4:4:4/29.97PsF
1080/4:4:4/30PsF						
1080/4:4:4/30PsF						
50i	1080/4:2:2/50i	625/50i	1080/4:4:4/50i	720/4:2:2/59.94P		
				1080/4:4:4/59.94i		
59.94i	1080/4:2:2/59.94i	525/59.94i	1080/4:4:4/60i	1080/4:4:4/60i		
				1080/4:4:4/60i		
60i	1080/4:2:2/60i	—	—	1080/4:2:2/59.94i		
				1080/4:4:4/59.94i		
HDCAM-SR	720/4:2:2	59.94P	720/4:2:2/59.94P	525/59.94i		
				1080/4:4:4/59.94i		
HDCAM-SR	1080/4:4:4 (6003)	23.98PsF	1080/4:4:4/23.98PsF	—		
				525/59.94i	1080/4:2:2/23.98PsF 1080/4:2:2/59.94i 720/4:2:2/59.94P	
				—	1080/4:2:2/24PsF 1080/4:2:2/60i	
		24PsF	1080/4:4:4/24PsF	—	625/50i	1080/4:2:2/25PsF
						1080/4:2:2/60i
		25PsF	1080/4:4:4/25PsF	—	525/59.94i	1080/4:2:2/25PsF
						1080/4:2:2/29.97PsF
		29.97PsF	1080/4:4:4/29.97PsF	—	625/50i	1080/4:2:2/29.97PsF
						720/4:2:2/59.94P
30PsF	1080/4:4:4/30PsF	—	—	1080/4:2:2/30PsF		
				1080/4:2:2/30PsF		
50i	1080/4:4:4/50i	—	625/50i	1080/4:2:2/50i		
				1080/4:2:2/50i		
59.94i	1080/4:4:4/59.94i	—	525/59.94i	720/4:2:2/59.94P		
				1080/4:2:2/59.94i		
60i	1080/4:4:4/60i	—	—	1080/4:2:2/60i		
				1080/4:2:2/60i		
Digital BETACAM (5002)	525/4:2:2	59.94i	1080/4:2:2/59.94i	525/59.94i	720/4:2:2/59.94P	
	625/4:2:2	50i	1080/4:2:2/50i	625/50i	—	

**HDCAM SR**

## Pour le terrain

✍ Enregistreur portable HDCAM SR

✍ SRW-1 + SRPC-1

✍ Plusieurs modes :

- 4:2:2 - 440 Mb/s
- 4:4:4 - 440 Mb/s
- 4:4:4 - 880 Mb/s
- Stéréo (3D) 4:2:2 (2x 440Mb/s)





# SRW-1 / SRPC-1



SRW-1  
Transp.



SRPC-1  
Interf.



**HDCAM SR**

## SRW-1 / SRPC-1



### Format HDCAM-SR

- 1080 23.98PsF ~ 30PsF, 50i ~ 60i @ 4:2:2 ou 4:4:4
- cassette S : 50min @24P / 40min @ 60i

### Format HDCAM-SR Double vitesse

- mode 3-D
  - 2 Cameras -> 1 VTR -> 1 cassette
- 4:4:4 haute qualité

### On-line Feeder

- Remote 9pin



**HDCAM SR**

# SRW-1 / SRPC-1

## Enregistrement 4:2:2 avec HDC-950



HD-SDI



## prise de vue 3-D (Stéréo)

Camera Gauche



Camera Droite



HD-SDI  
Link-A

HD-SDI  
Link-B



## Enregistrement Continu

SRW-1 + SRPC-1



SRW-1



You make it a **SONY**

# **HDCAM SR**



  
You make it a Sony